

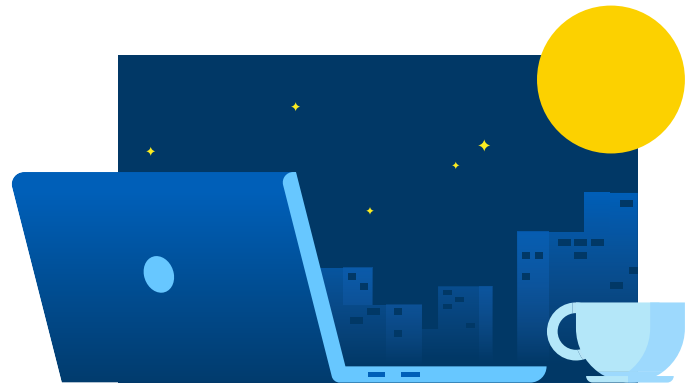
Get Rid of Rollbacks with Feature Monitoring

Release nights are a stressful ritual for everyone.

What if you could quickly detect which new features caused an error?

Split manages your features with flags so you can gradually roll out new code. Feature Monitoring ties each feature flag to engineering metrics, ensuring that your release does not degrade system performance or user experience.

Split is the only platform that ingests real user monitoring and error tracking data. Split analyzes this data and detects release issues within minutes, before you roll out functionality to a wider set of users. And once an alert is triggered you can instantly kill the feature, no rollback required.



Automatically detect errors



Feature releases often lead to errors or performance issues that degrade user experience. Split ingests error and performance metrics and ties these to the feature a user is exposed to, reducing the risk of performance degradations large and small.



Instantly identify root cause

Figuring out which feature caused a problem doesn't need to be like finding a needle in a haystack. Split statistically analyzes each new features with user experience metrics to identify which one is responsible, no matter how many changes you made in your release.



Alert and kill without a rollback

No one likes to be on call after a release. Ensure you summon the right team with alerting tied to root cause release issues. Then restore services as fast as a click of a button, keeping the blast radius of any production change to a small proportion of your user base.

Detect and Eliminate Production Errors in Minutes

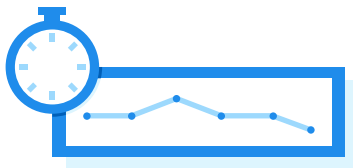
Integrates with error tracking and user monitoring



Feature Monitoring includes four data sources for performance and error info:

- Integrate with your Sentry error tracking data.
- Collect page timings and errors with Split's RUM Agent.
- Track custom events directly from our SDK.
- Import data from any source using Webhooks.

Detect performance changes due to new features



Split begins monitoring within 5 minutes to identify exactly which features harm user experience, even across across many concurrent features and metrics. Split measures and analyzes performance all in one place.

Your engineers will know right away which portions of their release are performing poorly.

Alert your team to close the loop



Restore performance quickly with alerts that trigger for the engineering team who is responsible. Then hit the kill switch to instantly turn off any misbehaving feature.

Make your MTTR as short as it takes you to press the kill switch.

Rapidly and Safely Deploy with Feature Monitoring

“With Feature Monitoring, our engineering team can deploy rapidly while ensuring that new functionality won’t negatively impact our core KPIs such as page load time and errors per user.”

Seth Moore, Lead Software Engineer



“Our team uses Split feature flags to deploy quickly and experiment with new ideas. Feature Monitoring gives us a safe way to release features to our global user base with less risk.”

Björn Levidow, Sr. Director Product Management for Analytics

